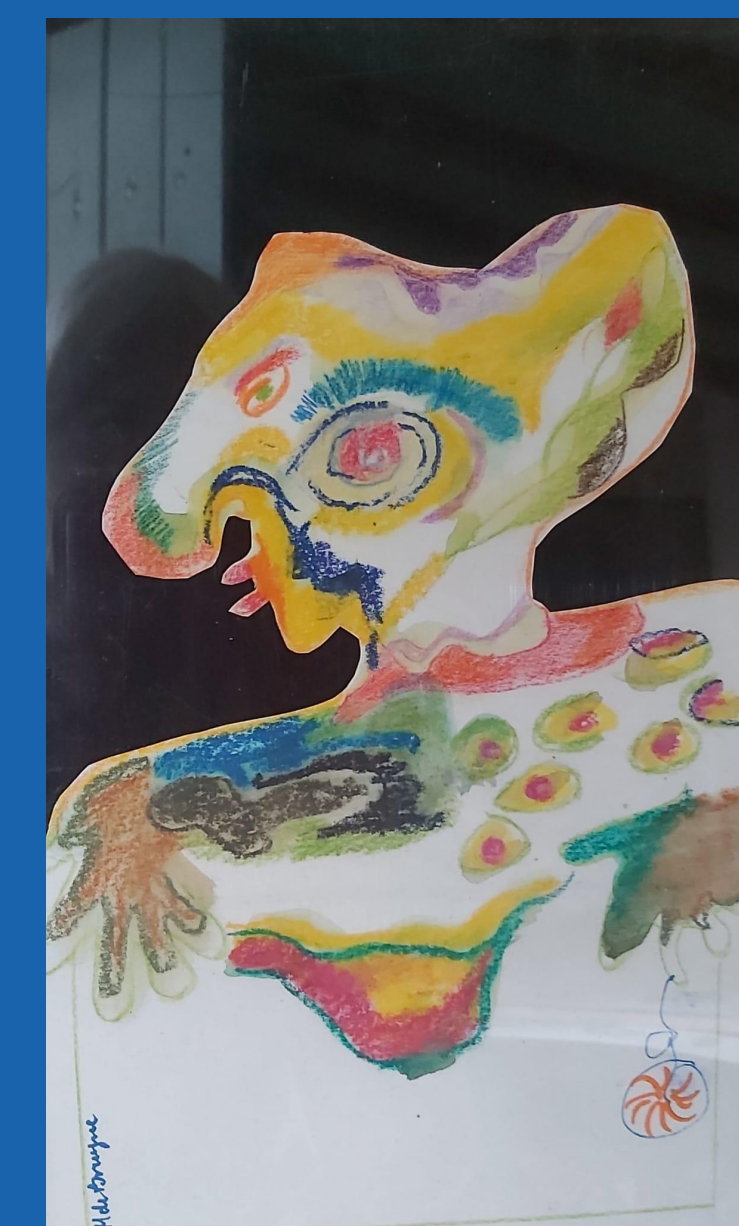
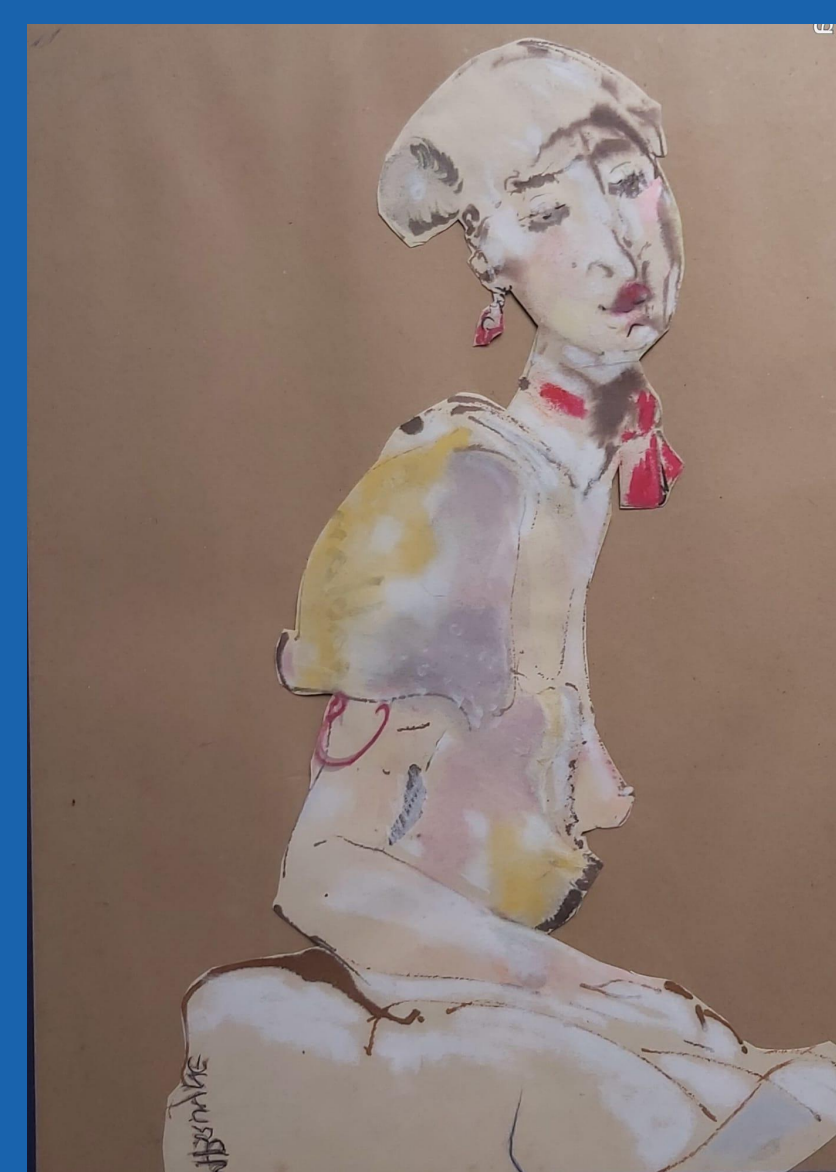
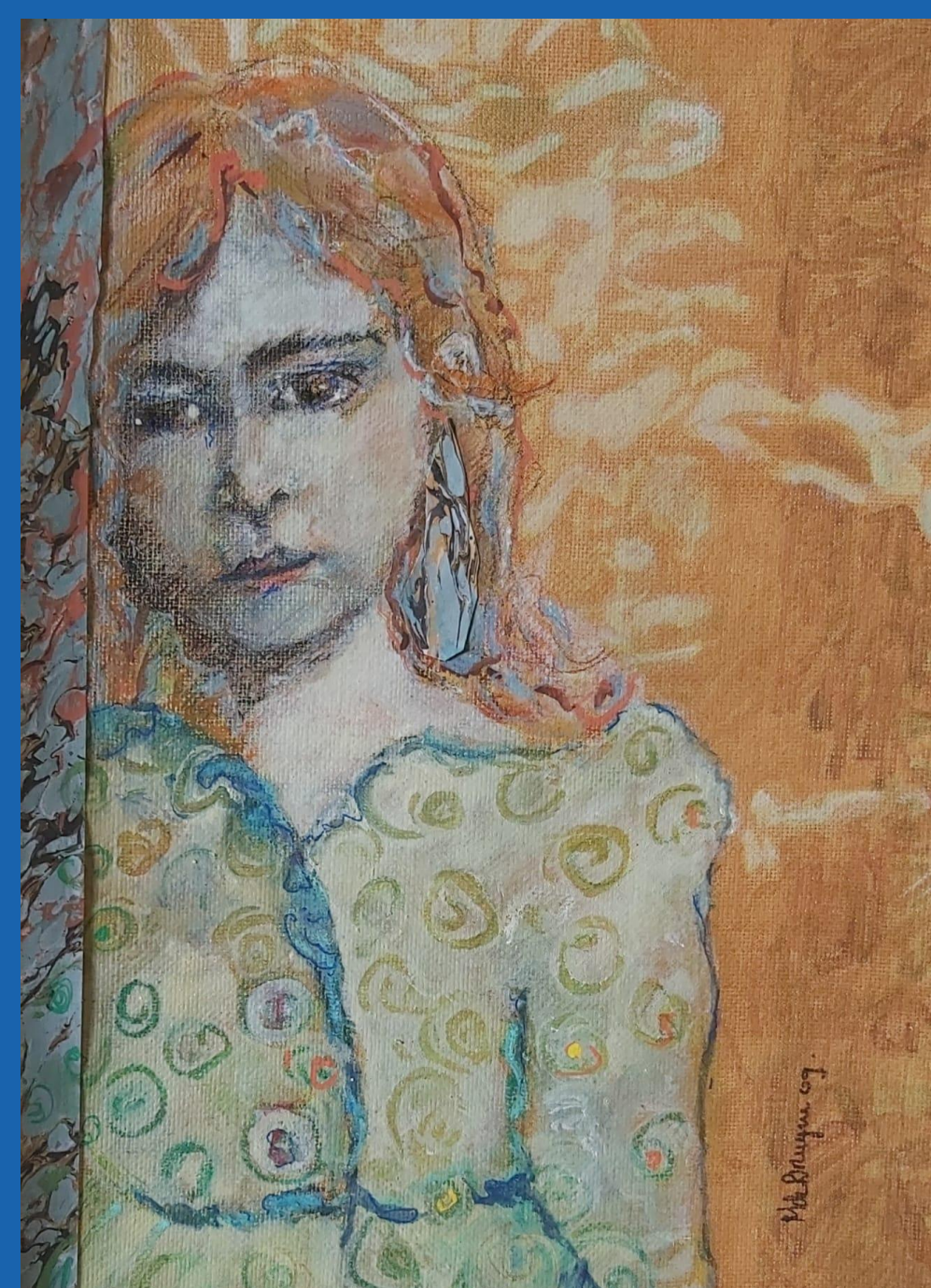
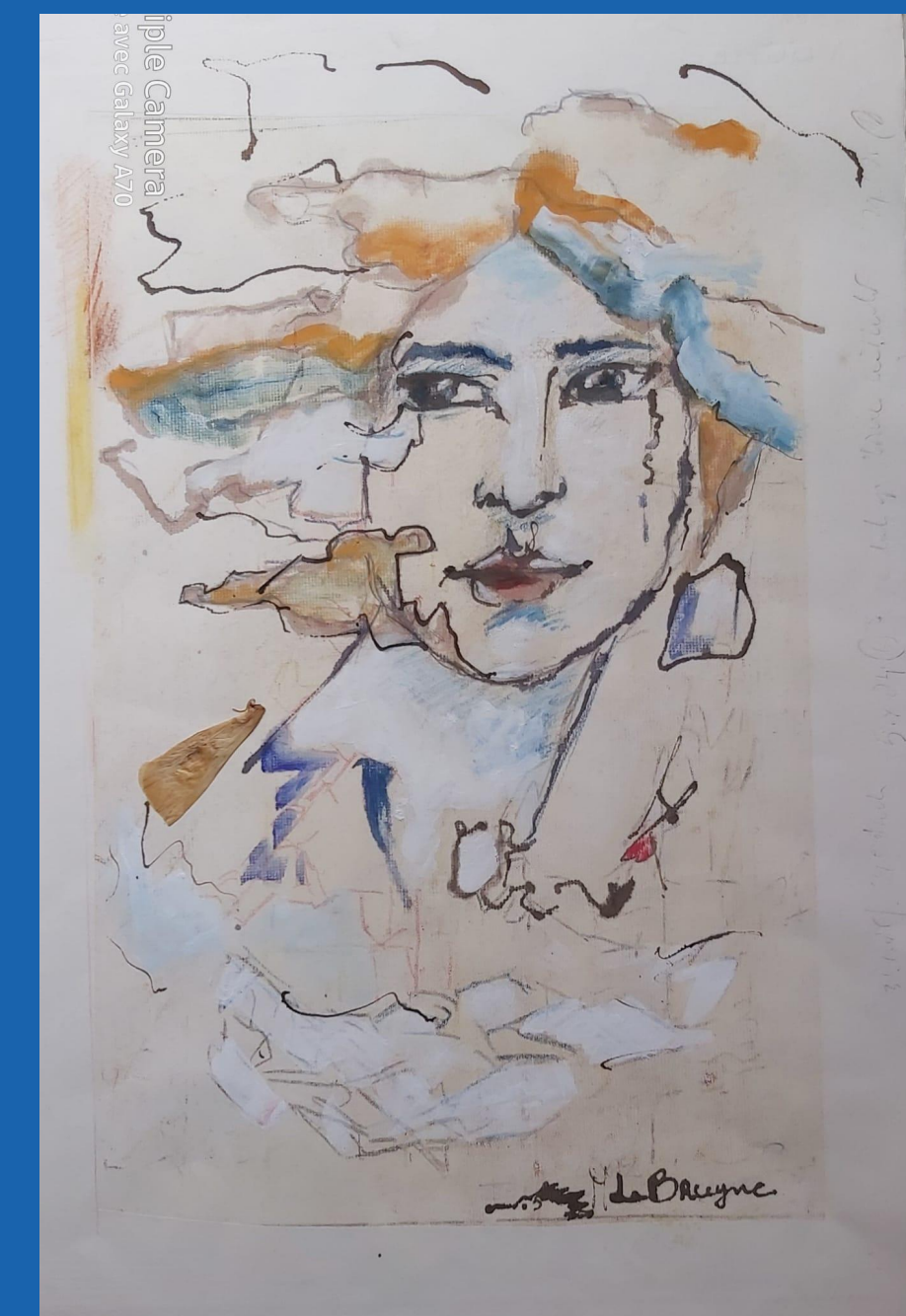
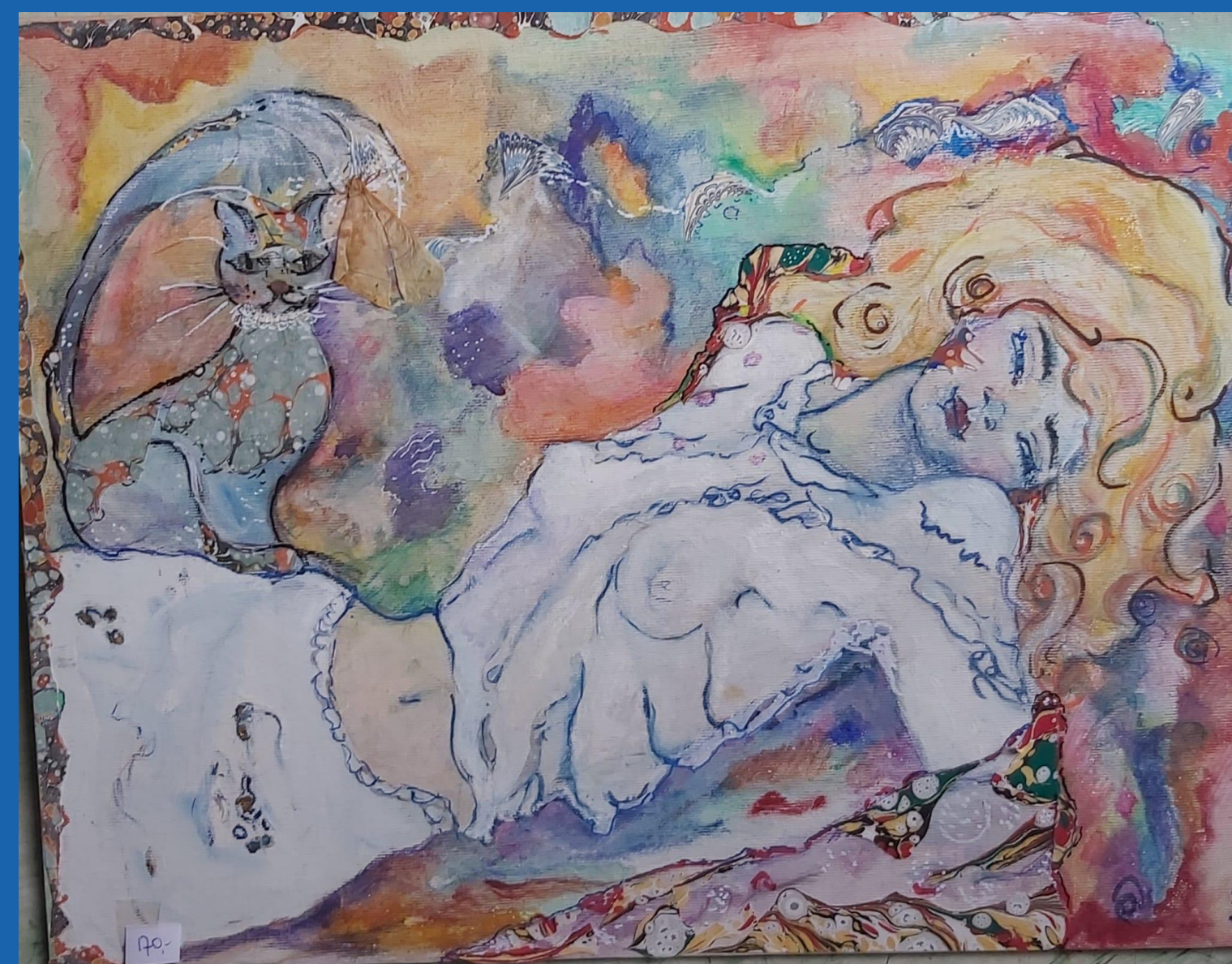
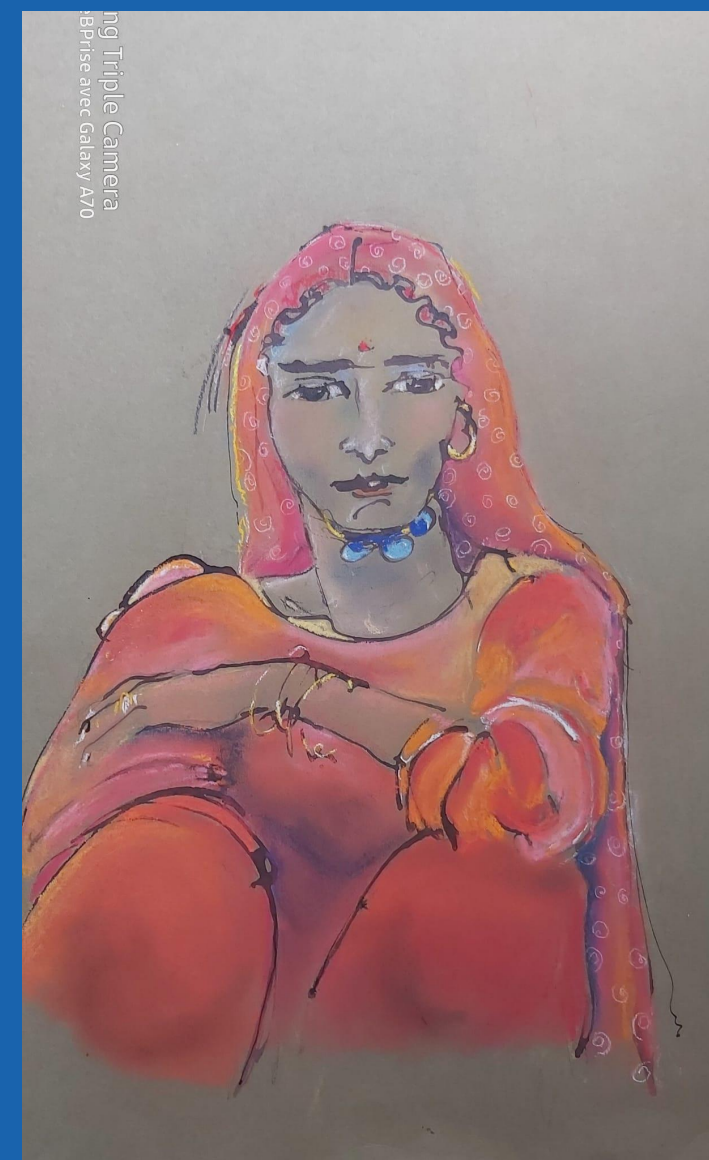
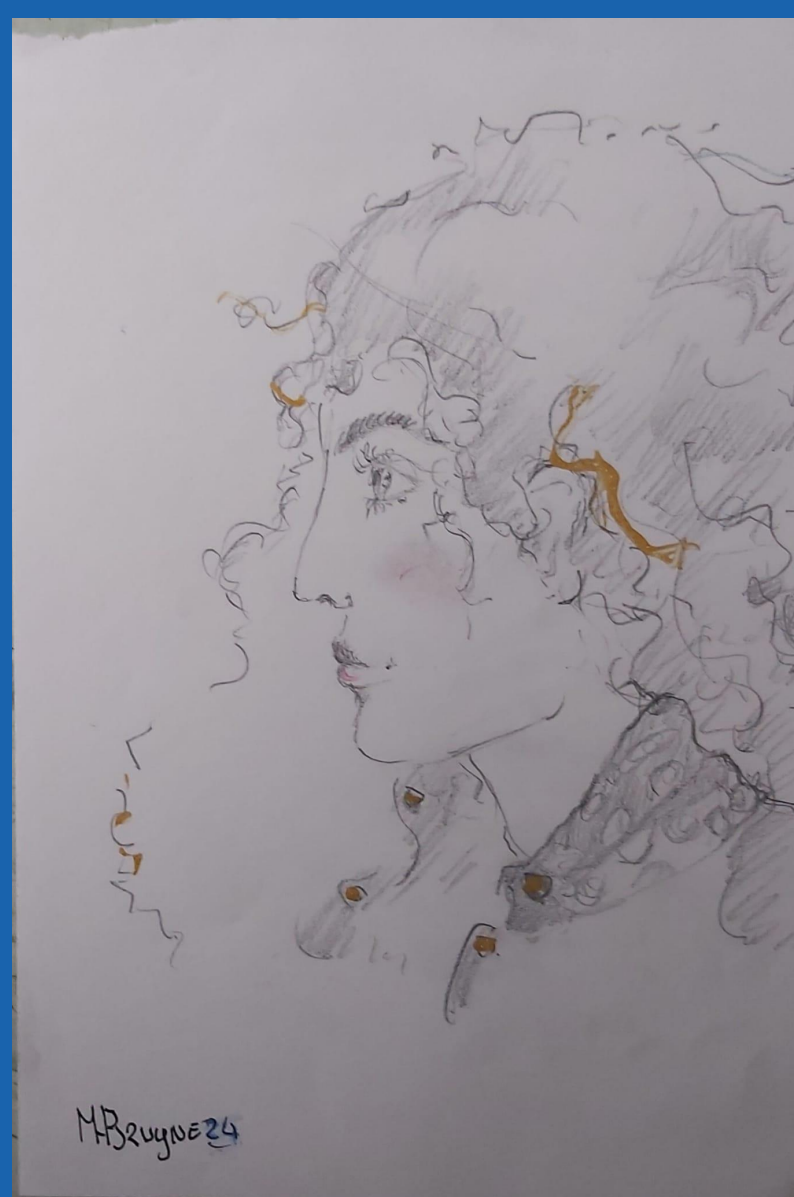
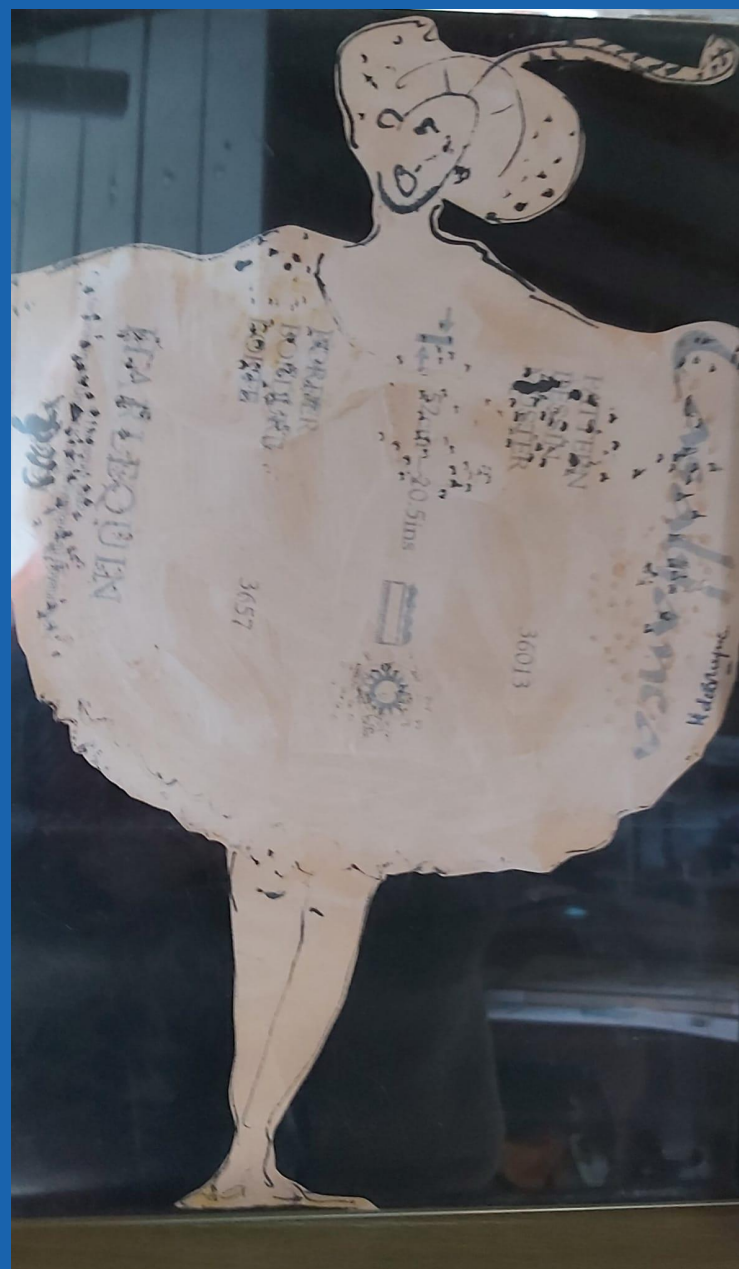


EXPO

Marina de Bruyne

*je ne sais pas à l'avance ce que je vais dessiner
les images se présentent à moi comme dans un rêve
je peux à peine les revendiquer*



Vernissage le
18 avril à 18h

Mercredi **10h - 22h**
Vendredi **18h - 22h**
Samedi **10h - 22h**

 **La Chaussée, 30260 Quissac**

asso d u pont

